



Epoxy Flake System Colour Chart

Ash (S) - Neutral Base (N23)



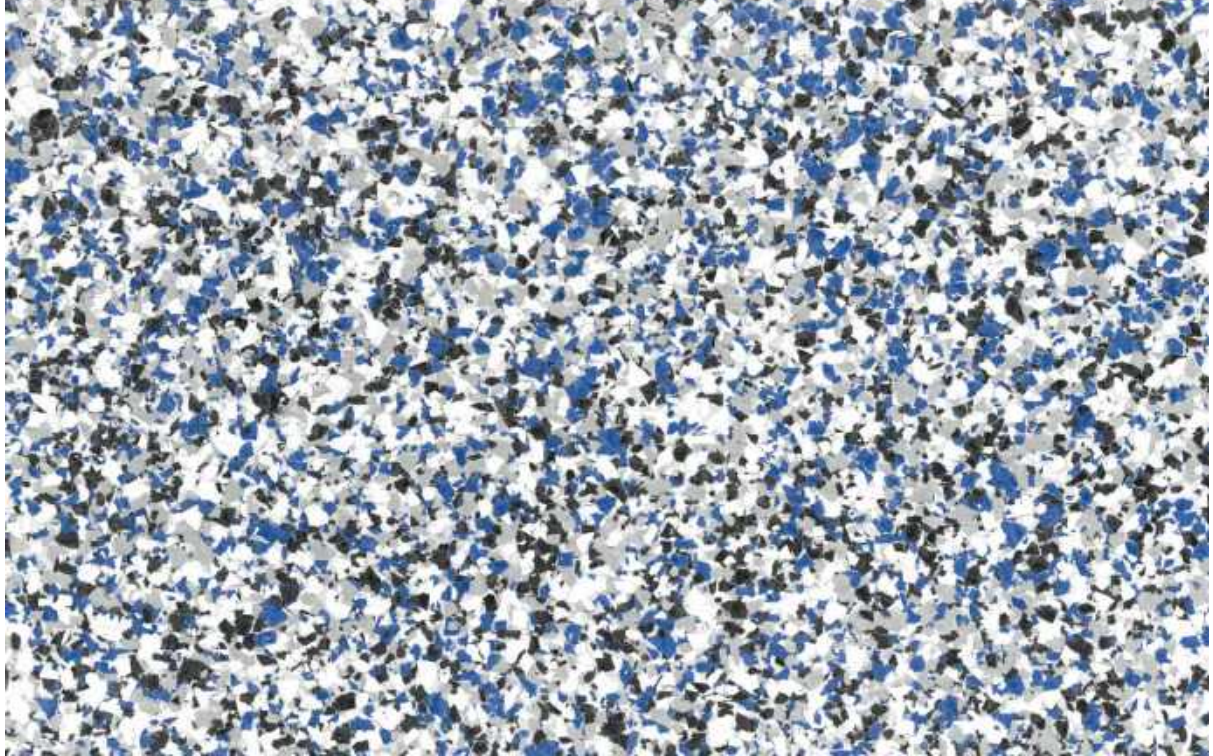
Ash (S) - Pipeline Base (N43)



Biscuit (S) - Merino Base (Y56)



Blue Storm (S) - Neutral Base (N23)



Blue Storm (S) - Pipeline Base (N43)



Bullseye (J) - White Base (N14)



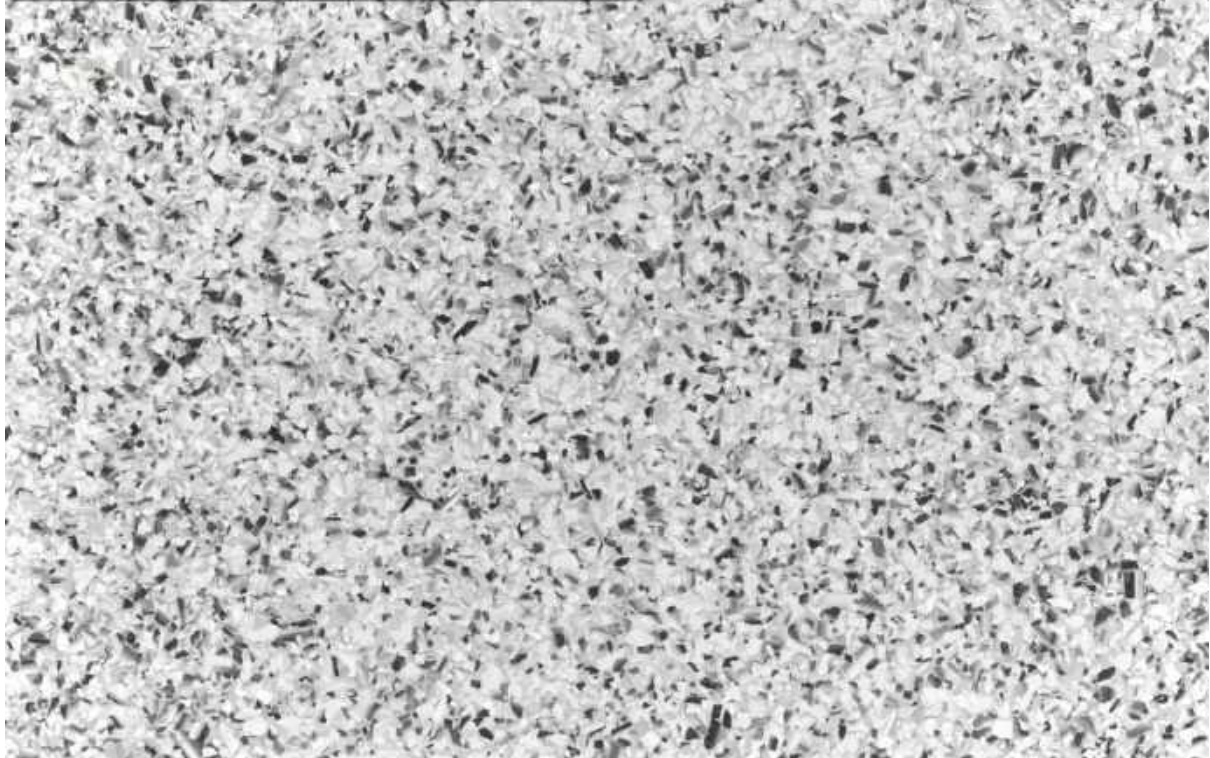
Bullseye (J) - Black Base (N61)



Bullseye (L) - White Base (N14)



Bullseye (L) - Neutral Base (N23)



Camo (L) - Pipeline Base (N43)



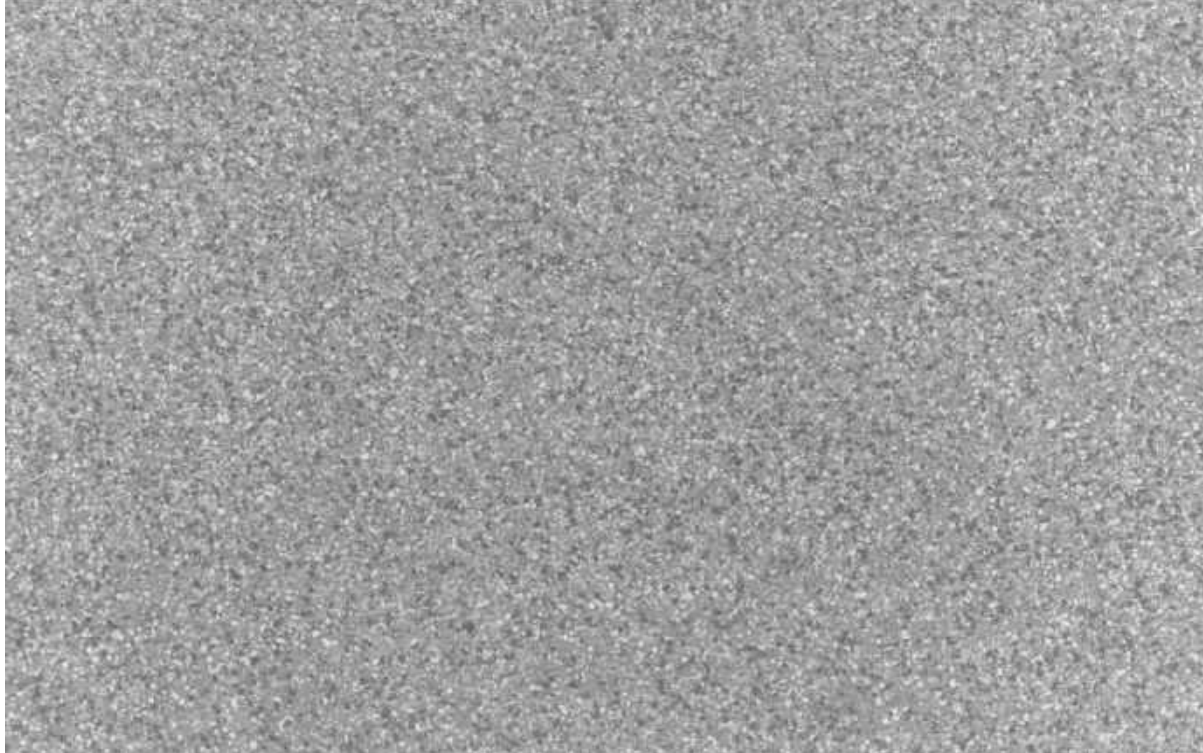
Camo (S) - White Base (N14)



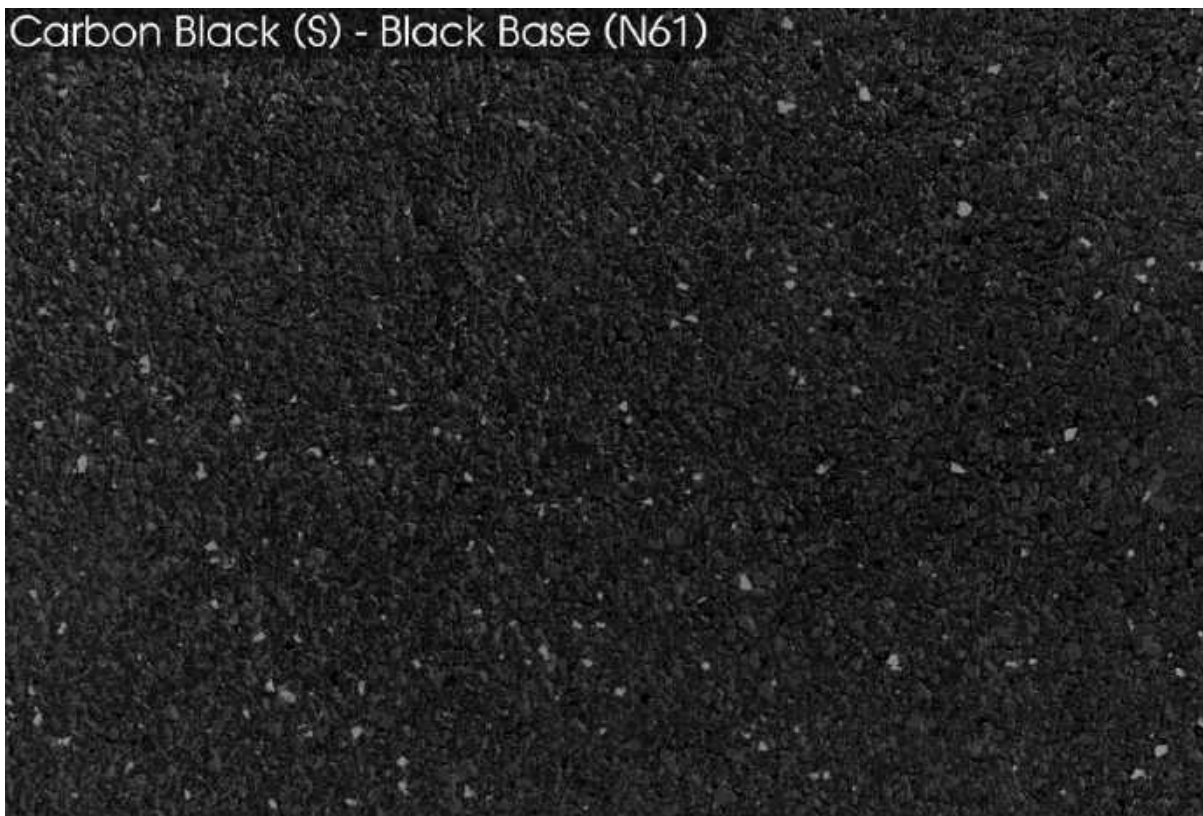
Camo (S) - Pipeline Base (N43)

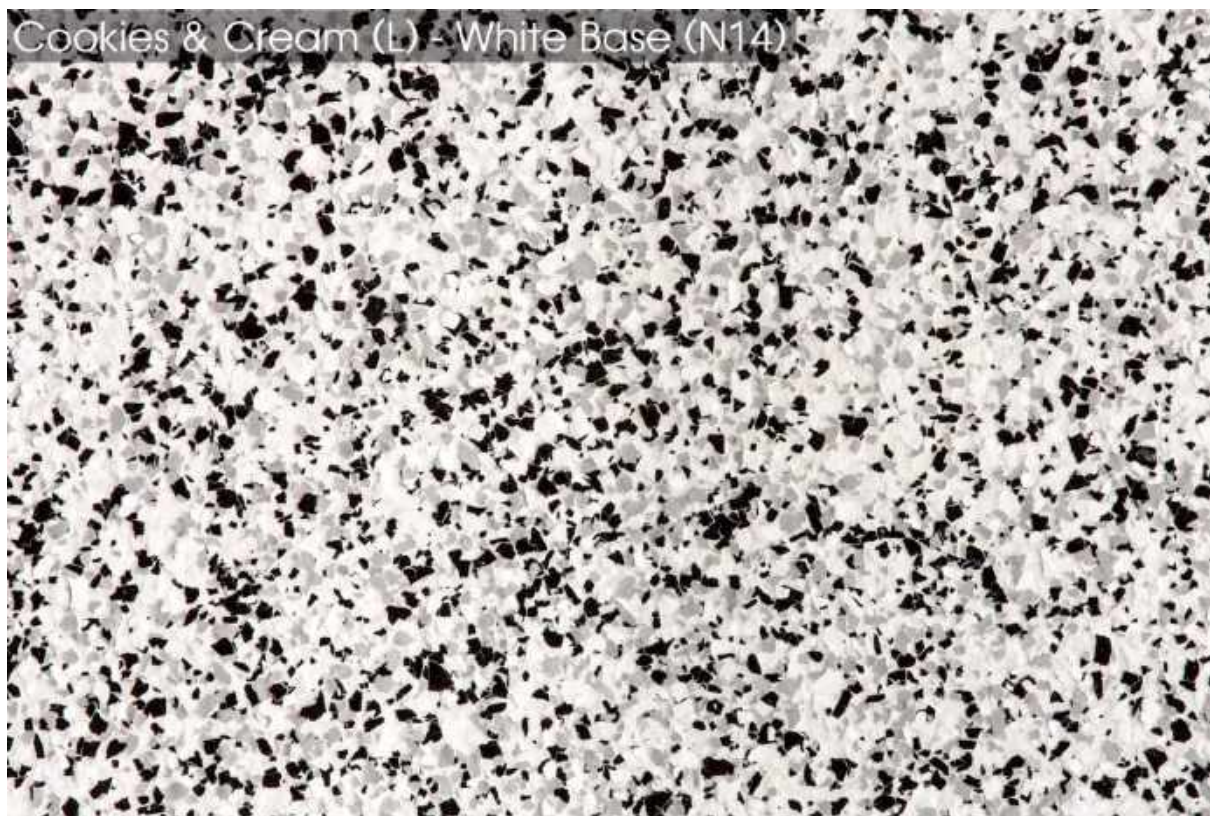


Camo (N) - Pipeline Base (N43)

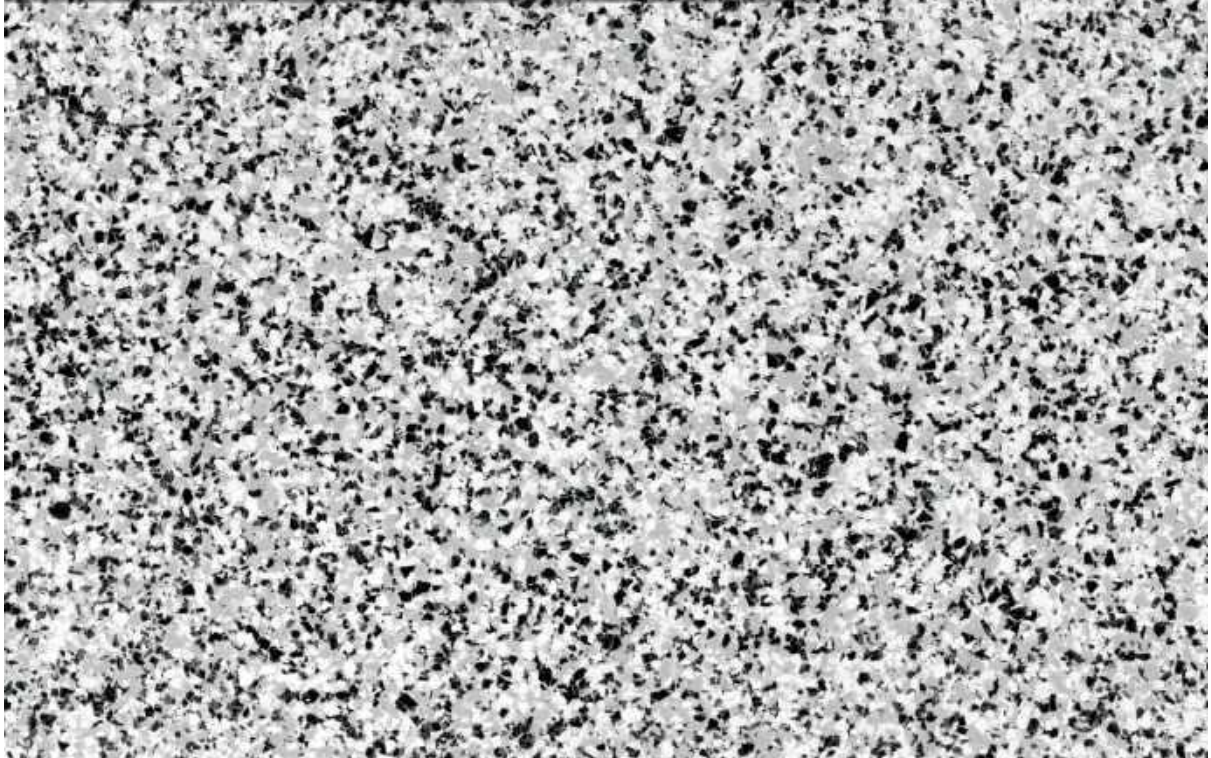


Carbon Black (S) - Black Base (N61)

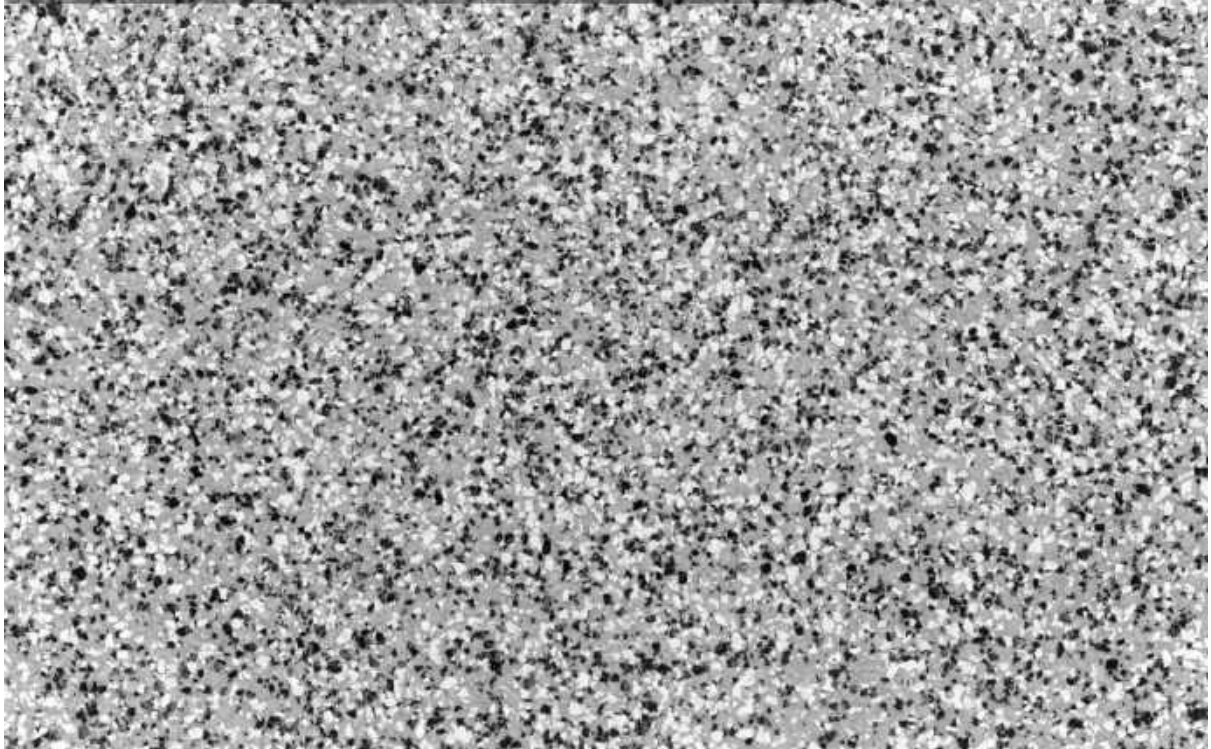




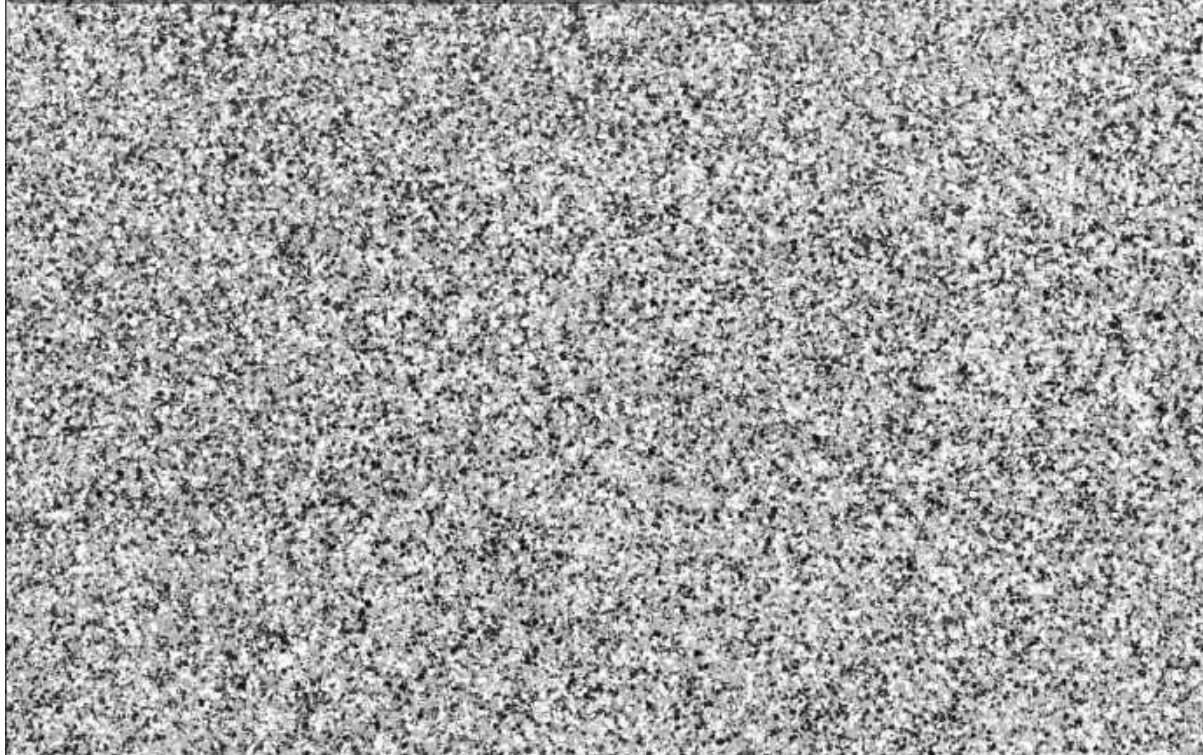
Cookes & Cream (S) - Neutral Base (N23)



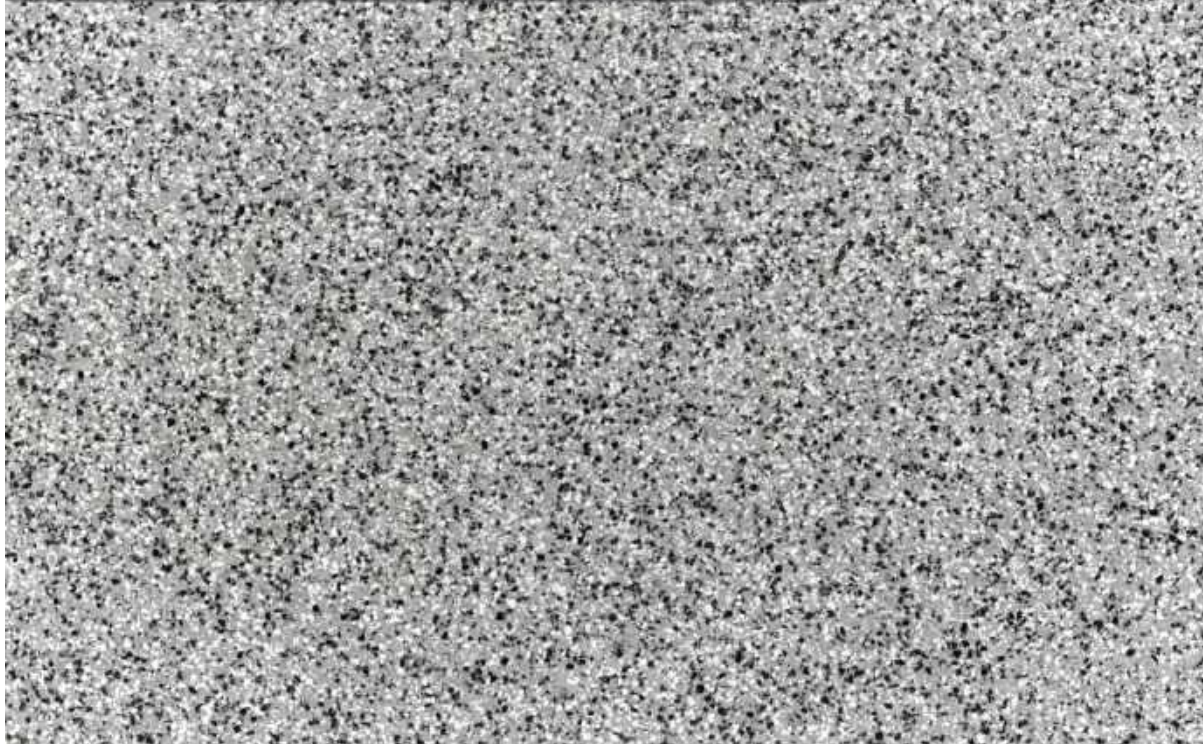
Cookes & Cream (S) - Pipeline Base (N43)



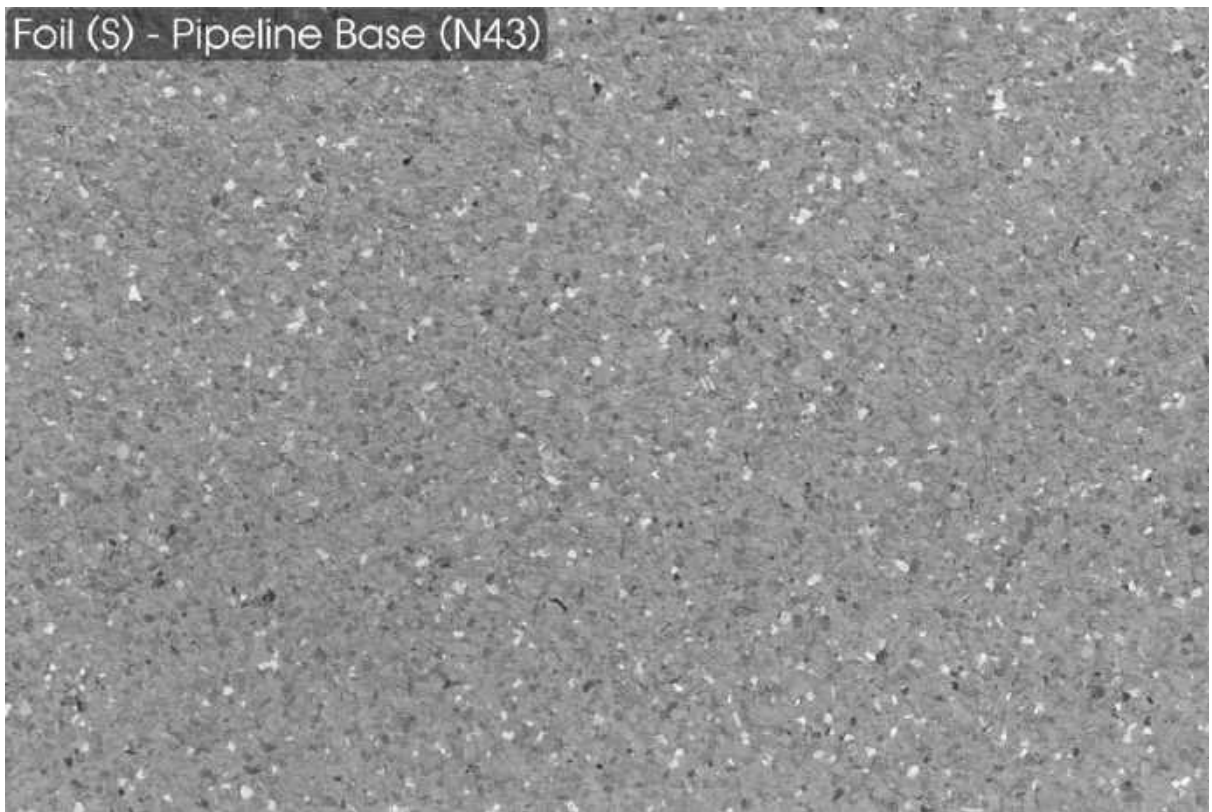
Cookes & Cream (N) - Neutral Base (N23)



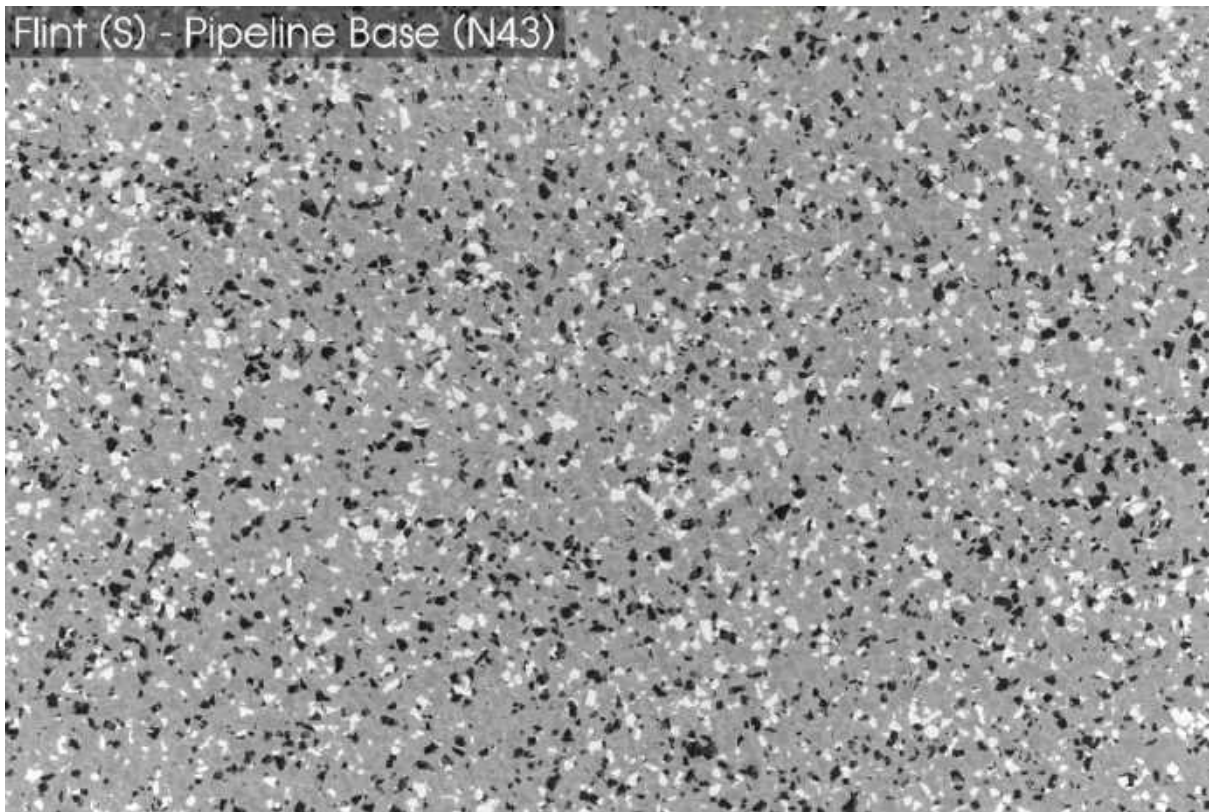
Cookes & Cream (N) - Pipeline Base (N43)



Foil (S) - Pipeline Base (N43)



Flint (S) - Pipeline Base (N43)



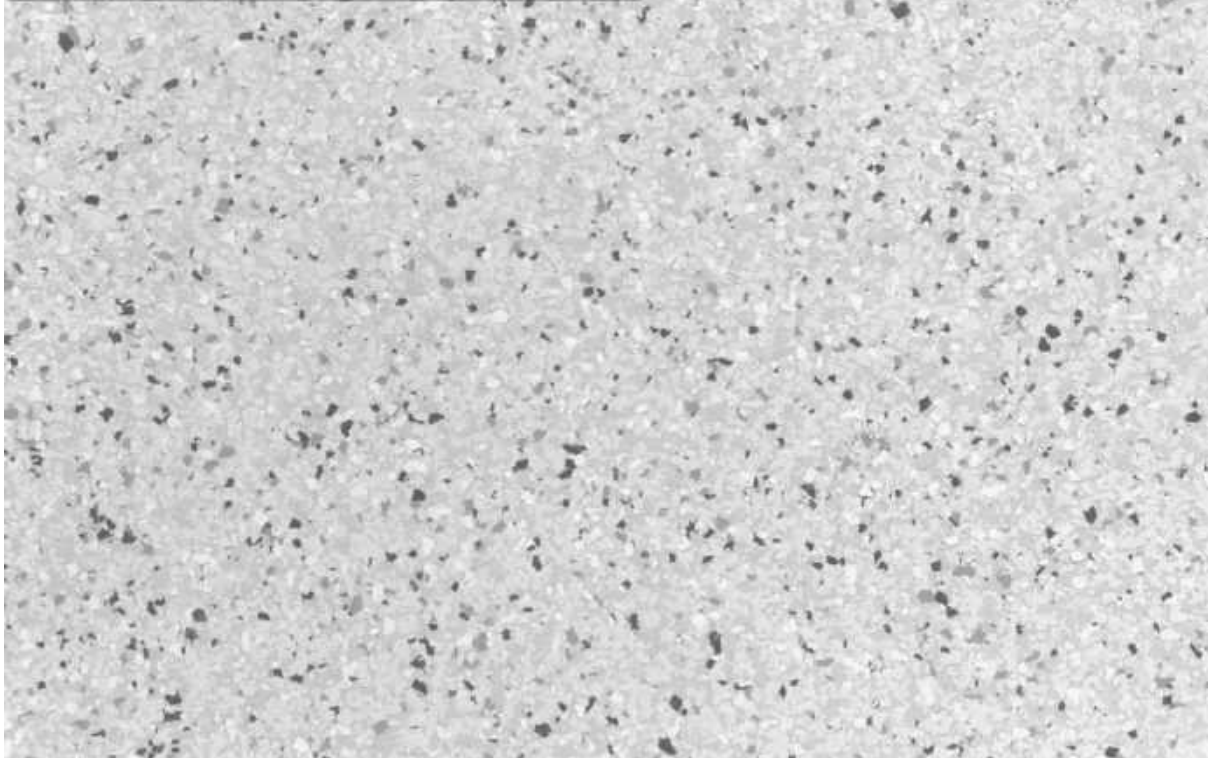
Frozen (S) - Neutral Base (N23)



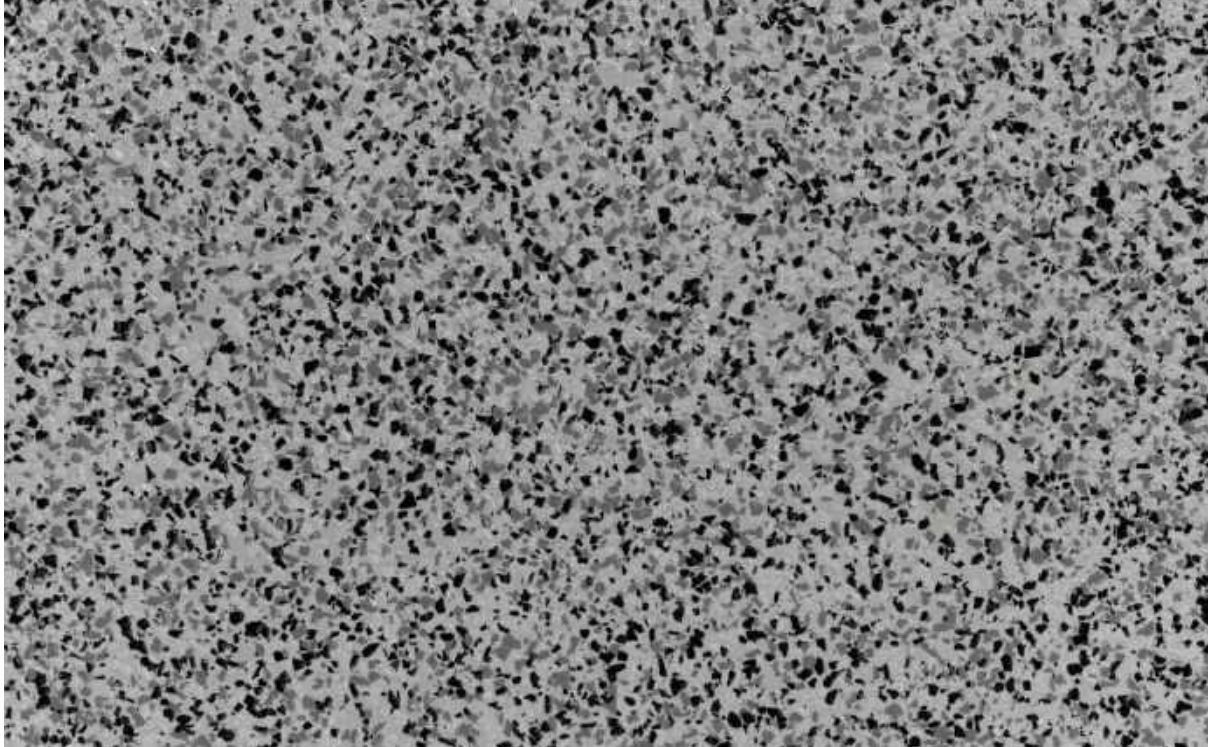
Frozen (S) - Pipeline Base (N43)



Granite (S) - Neutral Base (N23)



Graphite (S) - Pipeline Base (N43)



Heritage (S) - Black Base (N61)



Ice (S) - White Base (N14)



Ivory (L) - White Base (N14)



Ivory (L) - Neutral Base (N14)



Pebble (S) - Neutral Base (N23)



Slate (S) - Pipeline Base (N43)



Suede (S) - Merino Base (Y56)



Suede (S) - Pipeline Base (N43)



Toffee (S) - Merino Base (Y56)

